


# N1MM+ Logger Quick Tutorial

Load N1MM+ free logging program. Open it and it will ask you to setup your station. Use W5DRZ as the station, or if GOTA, use its' call. Example below

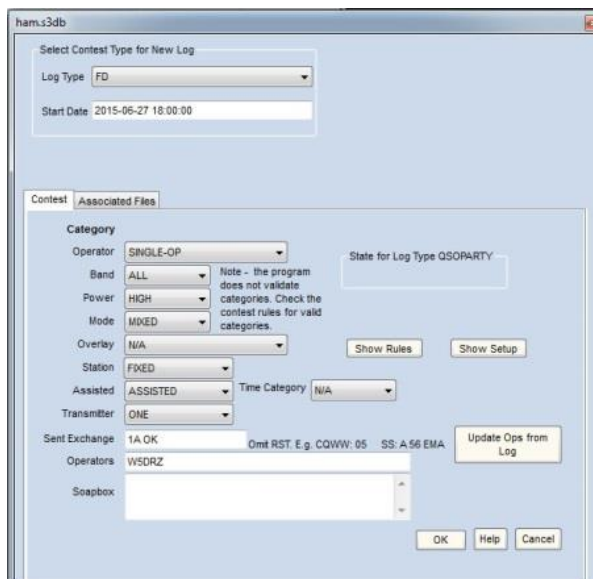


The 'Edit Station Information' dialog box contains the following fields and values:

- Call: W5DRZ
- Name: Dan Woods
- Address: 10221 S Kingston
- City: Tulsa, State: OK, Zip: 74137
- Country: UNITED STATES
- Grid Square: EM26BA, CQ Zone: 4, ITU Zone: 7
- License: extra, Latitude: 36.0208 N, Longitude: 95.8750 W
- Station TX/RX: ft 1200dx, Power: 100
- Antenna: TM 33A Jr, Ant. Height: 30, a.s.l. 765
- ARRL Section: OK
- Rover QTH: ASBURY
- Club: Broken Arrow Amateur Radio Club
- Email address: dawoods@ix.netcom.com

Buttons: Ok, Help, Cancel

Next go to FILE TAB on entry window. Open NEW DATABASE. LOG TYPE is FD from pull down. Date should be set for 2015 by program, if not, change. Example:

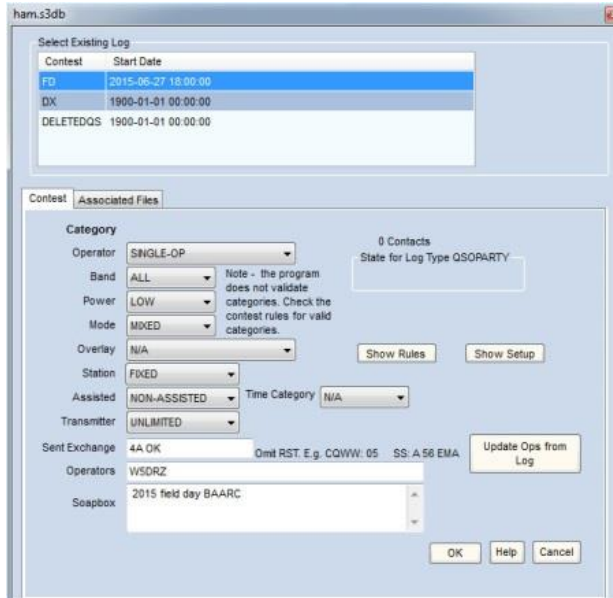


The 'Select Contest Type for New Log' dialog box contains the following fields and values:

- Log Type: FD
- Start Date: 2015-06-27 18:00:00
- Category: SINGLE-OP
- Band: ALL
- Power: HIGH
- Mode: MIXED
- Overlay: N/A
- Station: FIXED
- Assisted: ASSISTED
- Transmitter: ONE
- Sent Exchange: 1A OK
- Operators: W5DRZ
- Soapbox: (empty)

Buttons: OK, Help, Cancel

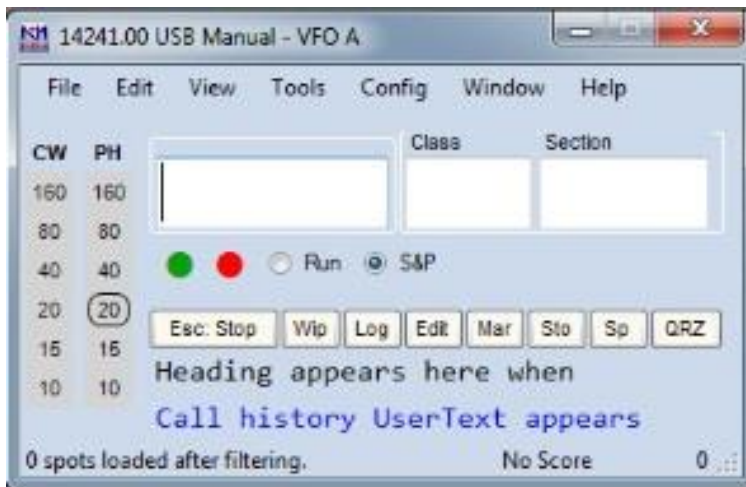
Fill in requested information: see below for how I did it.



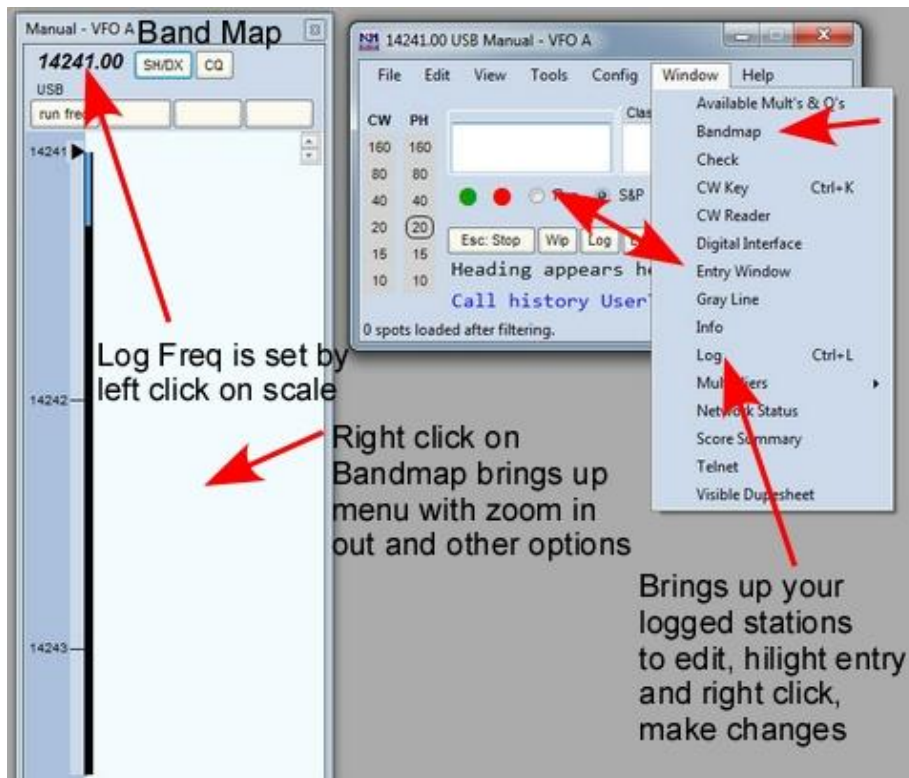
Hit OK

You are now left with the ENTRY WINDOW on the screen. If you are using a CAT controlled radio, use Config Tab to select “port settings...”, “hardware” tab. Trouble? Call 918-625-5321 Dan W5BM and I may can help.

Note: data entry is straight forward, enter other stations “Call” “Class” and “section”. Once blanks are filled hit return or LOG to enter in LOG. Note the frequency in the upper left; if CAT controlled, this and mode will change with radio settings, if not use BANDMAP from window TAB as discussed below to set frequency which will be logged. Once blanks are filled hit return or “LOG” to enter contact in your digital log.



Shown below are the Band Map and the “window” pull down menu. Useful items under the “window” pull down window are the “LOG” tab, the “ENTRY” TAB and the “Band Map”. Many other items are useful when internet is available and Telenet spotting is turned on..



The above discussion was for a simple installation for Field Day logging. Each time the operator changes, use the CONFIG menu on the ENTRY window to change operator call sign “Change operator call sign ...” .

Call Dan Woods, W5BM, 918-625-5321 with fellow up questions.